

PART NUMBER

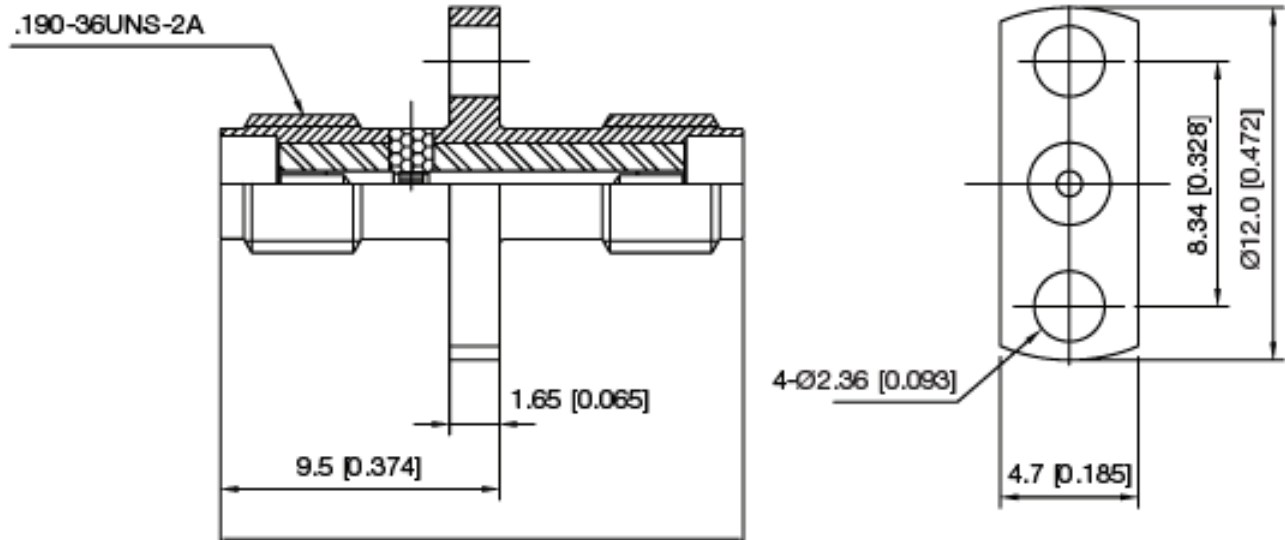
KAD177140

REV.

INITIAL

Electrical Data

Impedance	50 Ω
Frequency Range	DC - 26.0 GHz
Insulation Resistance	5000 M Ω Min.
Contact Resistance	≤ 3 M Ω
Working Voltage	500 V rms Max.
DWV	750 V Min.

RoHS Compliant

VSWR and Frequency Range Specifications are for reference and are dependant on cable type and other application specific conditions

Drawing not to scale. Dimensions for reference only

WWW.KONNECTRF.COM
540 NW University Blvd. Ste. 109
Port Saint Lucie, Florida, 34986
1-800-790-5887

PART NUMBER

KAD177140

DESCRIPTION

Adapter - In-Series - SSMA Straight Female Jack To Female Jack - 2 Hole Flange Mount

CAGE CODE

664U0

SIGNATURE

X

Materials

Body / Nut
Center Contact
Insulator

Stainless Steel
Be.Cu
PTFE

Passivated
Gold Plated

THIS DRAWING INCLUDING THE DESIGNS IS THE PROPERTY OF KONNECT RF AND IS NOT TO BE USED FOR ANY PURPOSE WITHOUT OUR APPROVAL.