

PART NUMBER

**KAD177018**

REV.

DATE

COMMENTS

INITIAL

**Electrical Data**

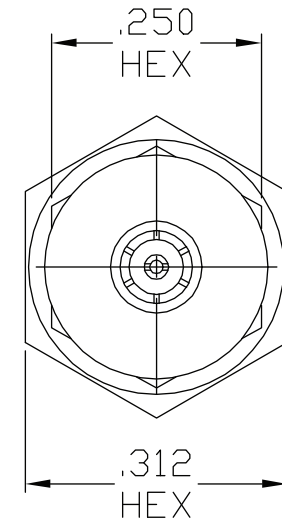
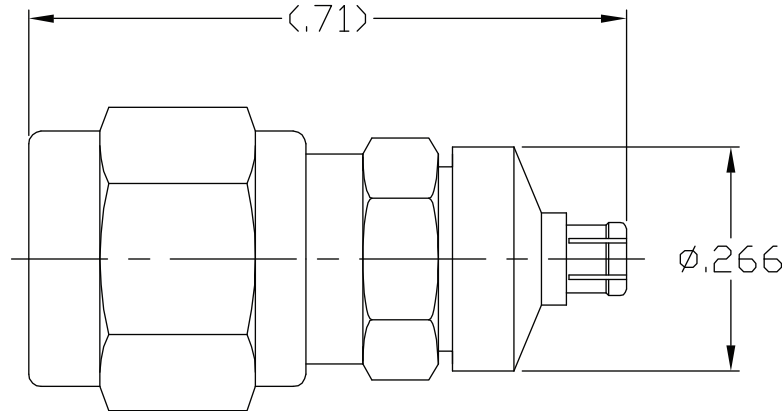
Impedance	50 $\Omega$
Frequency Range	DC - 26.5 GHz.
Insertion Loss	$\leq 0.4 \text{ dB} \times \sqrt{\text{FGHz}}$
Voltage Rating	70 VRMS
RF Leakage	80 dB- FGHz
Contact Resistance	
Center	$\leq 6.0 \text{ m}\Omega$
Outer	$\leq 2.0 \text{ m}\Omega$
Insulation Resistance	$\geq 5,000 \text{ M}\Omega$
Dielectric Withstanding Voltage	500 VRMS
VSWR	$\leq 1.05 + .004 \times \text{FGHz}$

**Mechanical Data**

Connector Durability	Full Detent 100; Smoothbore 1,000
Temperature Range:	-65 °C - 200 °C
Captivation-Center Contact	
Min. Axial Force	1.5 LBS
Dynapac Mating Force	
Engage	Detent 4.5 LBS; Smoothbore 2.5 LBS
Disengage	Detent 6.5 LBS; Smoothbore 1.5 LBS

**Environmental**

Temperature Cycling	MIL-STD-202, Method 102, Cond. C (-65 °C - 165 °C)
Shock	MIL-STD-202, Method 213, Cond. I (100 G's)
Vibration	MIL-STD-202, Method 204, Cond. D (20 G's)
Moisture Resistance	MIL-STD-202, Method 106, Less Step 7b
Corrosion	MIL-STD-202, Method 101, Cond. B (48 Hours)
Barometric Pressure (Altitude)	MIL-STD-202, Method 105, Cond C (70,000 FT) (125 VRMS)

**RoHS Compliant****Drawing not to scale. Dimensions for reference only****Units: inches****Konnect RF**

WWW.KONNECTRF.COM  
1-800-790-5887

PART NUMBER

**KAD177018**

DESCRIPTION

**Adapter, Between Series, SMA Male Plug to SMPM Female Jack**

CAGE CODE

**664U0**

SIGNATURE

X

THIS DRAWING INCLUDING THE  
DESIGNS IS THE PROPERTY OF  
KONNECT RF AND IS NOT TO  
BE USED FOR ANY PURPOSE  
WITHOUT OUR APPROVAL.

**Component**

SMA Connector Body & Nut  
SMPM Connector  
Center Contact  
Insulator

**Material**

Stainless Steel  
BeCu  
BeCu  
PTFE

**Plating/Finish**

Passivated  
Gold  
Gold