

PART NUMBER

**KAD177015**

REV.

DATE

COMMENTS

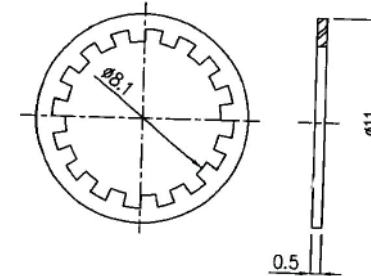
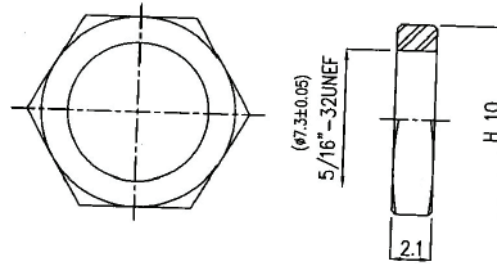
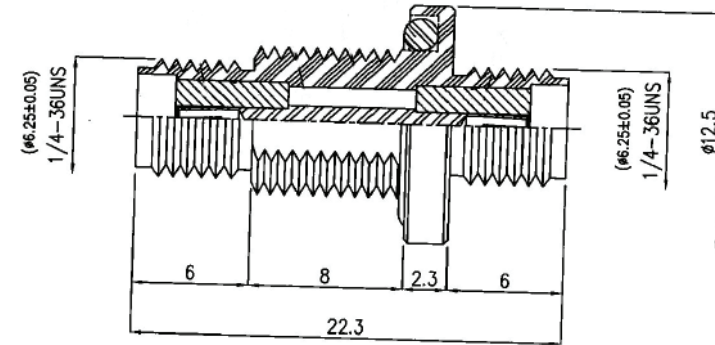
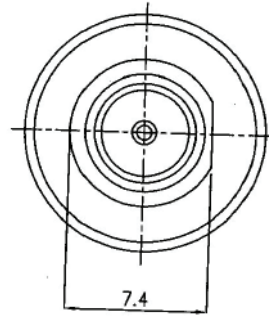
INITIAL

**Electrical Data**

Impedance	50 $\Omega$
Frequency Range	DC - 14GHz.
VSWR	1.2 Max
Contact Current	DC 5A Max
Dielectric Withstanding Voltage	1,000 V Max
Max Voltage Allowed	500 V max
Insulation Resistance	5,000 M $\Omega$

**Mechanical Data**

Temperature Range:	-65 °C - 165 °C
Waterproof Rating	IP67

**RoHS Compliant**

Drawing not to scale. Dimensions for reference only

Units: mm

**Konnect RF**

WWW.KONNECTRF.COM  
1-800-790-5887

PART NUMBER

**KAD177015**

DESCRIPTION

**Adapter, In-Series, SMA Female Jack to Female Jack, Bulkhead**

CAGE CODE

**664U0**

SIGNATURE

X

THIS DRAWING INCLUDING THE  
DESIGNS IS THE PROPERTY OF  
KONNECT RF AND IS NOT TO  
BE USED FOR ANY PURPOSE  
WITHOUT OUR APPROVAL.

**Component**

Body, Nut & Lock Washer  
Center Contact  
Insulator  
WaterProof Seal

**Material**

Brass  
Brass  
PTFE  
Silicone

**Plating**

Gold 3-5 $\mu$  Min  
Gold 3-5 $\mu$  Min