

PART NUMBER

KCC188015

REV.

DATE

COMMENTS

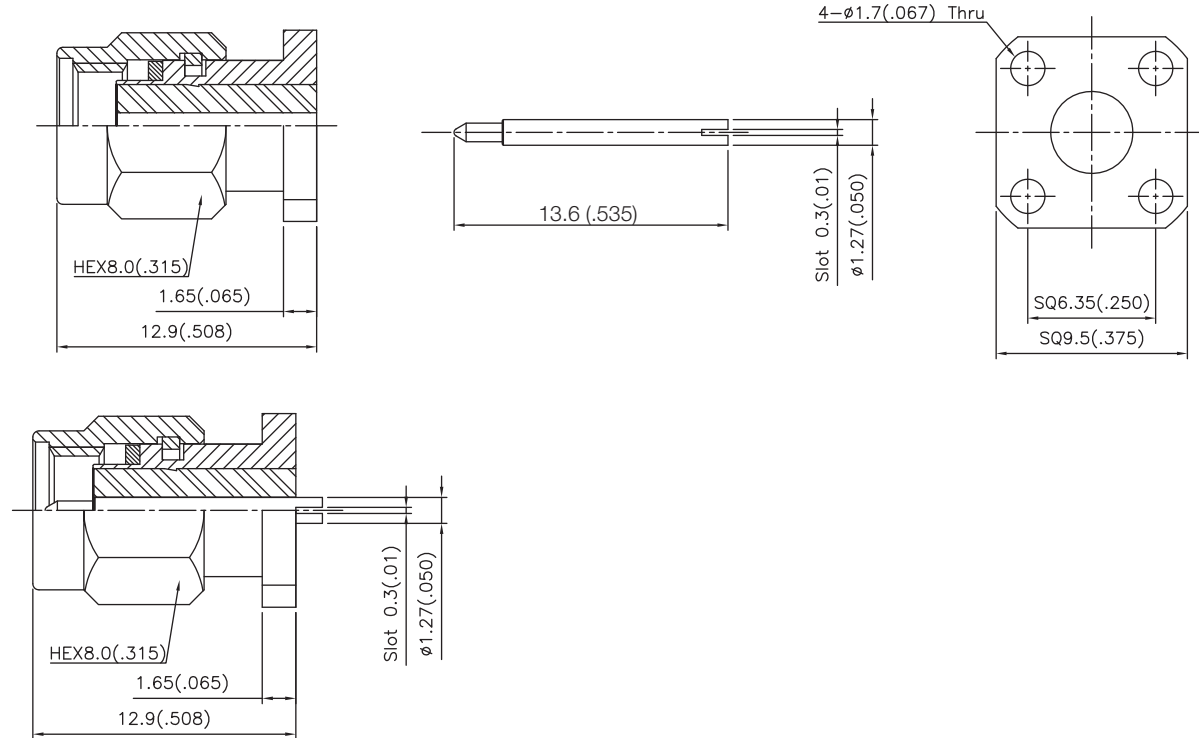
INITIAL

Electrical Data

Impedance	50 Ω
Frequency Range	DC - 18 GHz.
Contact Resistance	
Center	3.0 m Ω
Outer	5.0 m Ω
Insulation Withstanding Voltage	1,000 VRMS
Insulation Resistance	5,000 M Ω

Mechanical Data

Durability	500 Cycles Min.
------------	-----------------

RoHS Compliant**KCC188015 Supplied w/ Contact In Body**

Drawing not to scale. Dimensions for reference only

Units: mm (inches)

Konnect RF

WWW.KONNECTRF.COM
1-800-790-5887

PART NUMBER

KCC188015

DESCRIPTION

SMA Straight Male Plug Receptacle, 4 Hole Flange Mount (0.375"), Slot Terminal (0.01"), Non-Captivated Outer Shell

CAGE CODE

664U0

SIGNATURE

X

THIS DRAWING INCLUDING THE DESIGNS IS THE PROPERTY OF KONNECT RF AND IS NOT TO BE USED FOR ANY PURPOSE WITHOUT OUR APPROVAL.

Component

Body
Center Contact
Insulator

Material

Stainless Steel
Brass
PTFE

Plating/Finish

Passivated
Gold