

PART NUMBER

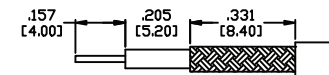
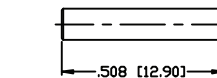
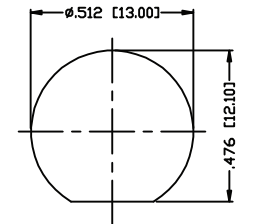
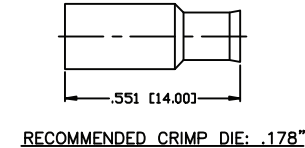
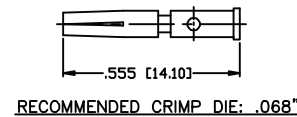
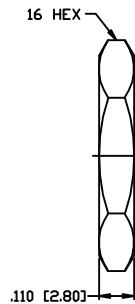
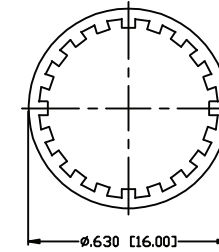
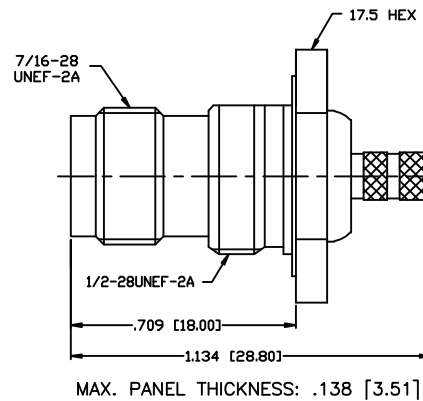
KCC187624

REV.

INITIAL

Electrical Data

Impedance	50 Ω
Frequency Range	DC - 7 GHz.
Working Voltage	500 VRMS
Insulation Resistance	5k MΩ Min.
Temperature Range:	-65 °C TO +85 °C

RoHS Compliant

RECOMMENDED STRIPPING DIMENSIONS

RECOMMENDED MOUNTING HOLE

VSWR and Frequency Range Specifications
are for reference and are dependant on cable
type and other application specific conditions

Drawing not to scale. Dimensions for reference only

Units: mm (inches)

Konnect RF

WWW.KONNECTRF.COM
1-800-790-5887

PART NUMBER

KCC187624

DESCRIPTION

**TNC Straight Female Jack, Crimp,
Bulkhead Rear Mount**

CAGE CODE

664U0

SIGNATURE

X

Cable Types: RG-174, 188, 316**Component**

Body
Contact
Nut & Washer
Ferrule
Gasket
Insulator

Material

Brass
Phos.Bronze
Brass
Brass
Rubber
Delrin

Plating

Nickel
Gold
Nickel
Nickel

THIS DRAWING INCLUDING THE
DESIGNS IS THE PROPERTY OF
KONNECT RF AND IS NOT TO
BE USED FOR ANY PURPOSE
WITHOUT OUR APPROVAL.