

PART NUMBER

KCC187421

REV.

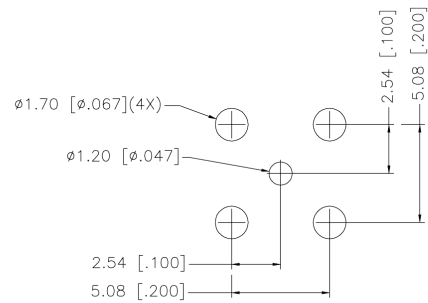
INITIAL

Electrical Data

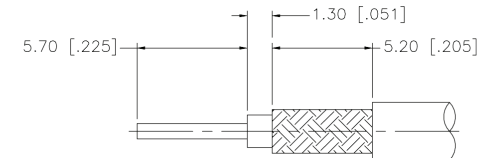
Impedance 50 Ω

Note:

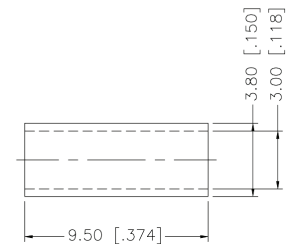
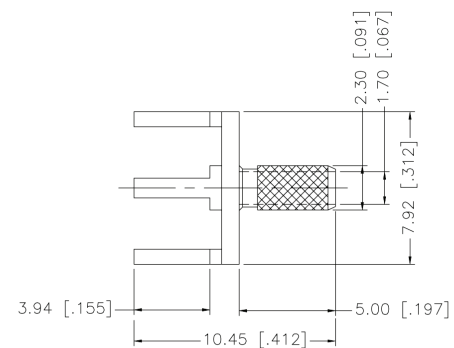
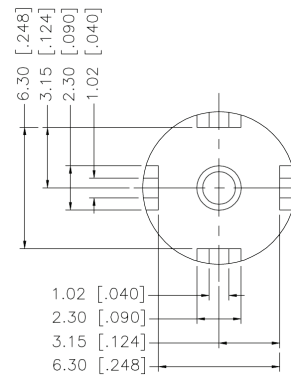
Crimped Ferrule Hex Crimp Size .128"

RoHS Compliant

PCB MOUNTING HOLES



RECOMMENDED CABLE STRIPPING DIM'S



VSWR and Frequency Range Specifications are for reference and are dependant on cable type and other application specific conditions

Drawing not to scale. Dimensions for reference only

WWW.KONNECTRF.COM
540 NW University Blvd. Ste. 109
Port Saint Lucie, Florida, 34986
1-800-790-5887

PART NUMBER

KCC187421

DESCRIPTION

Cable Termination - Straight - PCB Mount Crimp

CAGE CODE

664U0

SIGNATURE

X

Cable Types

RG 174, 188 & 316

Materials

Body
Ferrule
Insulator

Brass
Brass
PTFE

Gold Plated
Gold Plated

THIS DRAWING INCLUDING THE DESIGNS IS THE PROPERTY OF KONNECT RF AND IS NOT TO BE USED FOR ANY PURPOSE WITHOUT OUR APPROVAL.