

PART NUMBER

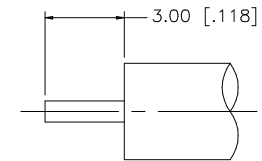
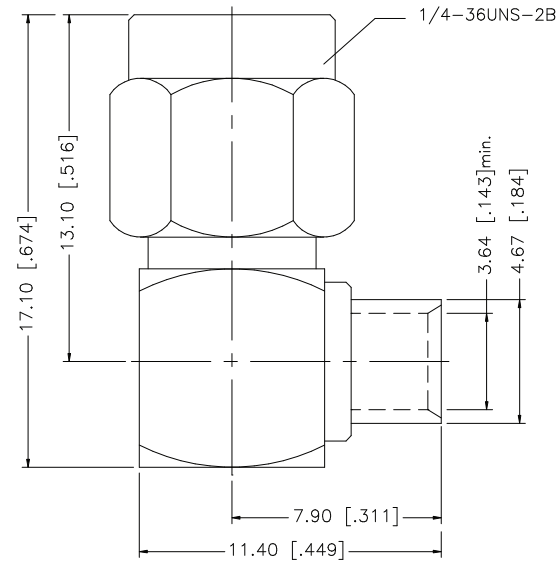
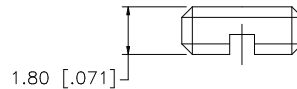
**KCC187236**

REV.

INITIAL

**Electrical Data**

Impedance 50 Ω

**RoHS Compliant**RECOMMENDED  
CABLE STRIPPING DIM'S

NOTE:

1) CONTACT PIN TO SOLDER

**VSWR and Frequency Range Specifications**  
are for reference and are dependant on cable  
type and other application specific conditions

Drawing not to scale. Dimensions for reference only

Units: mm [inches]

WWW.KONNECTRF.COM  
1-800-790-5887

PART NUMBER

**KCC187236**

DESCRIPTION

**SMA Right-Angle Male Plug, Solder  
for .141 S/R (RG-402)**

CAGE CODE

**664U0**

SIGNATURE

X

THIS DRAWING INCLUDING THE  
DESIGNS IS THE PROPERTY OF  
KONNECT RF AND IS NOT TO  
BE USED FOR ANY PURPOSE  
WITHOUT OUR APPROVAL.

**Component**

Body  
Center Contact  
Cover  
Insulator

**Material**

Brass  
BeCu  
Stainless Steel  
PTFE

**Plating**

Gold  
Gold  
Passivated