

PART NUMBER

**KCC187229**

REV.

DATE

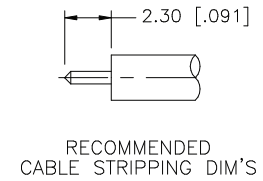
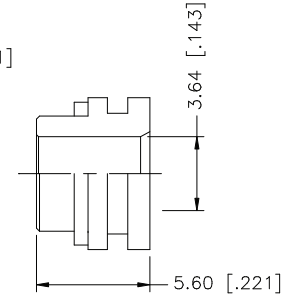
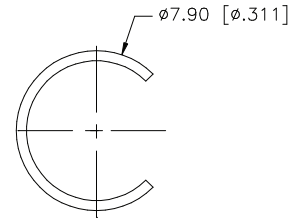
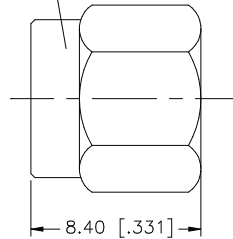
COMMENTS

INITIAL

**Electrical Data****RoHS Compliant**

Impedance 50 Ω

1/4-36UNS-2B



Drawing not to scale. Dimensions for reference only

Units: mm [Inches]

**Konnect RF**WWW.KONNECTRF.COM  
1-800-790-5887

PART NUMBER

**KCC187229**

DESCRIPTION

**SMA Straight Male Plug Short Profile, Solder**

CAGE CODE

**664U0**

SIGNATURE

X

**Cable Types:** .141 S/R (RG-402)

Component	Material	Plating
Body	Brass	Gold
Retainer Ring	BeCu	Natural
Nut	Brass	Nickel

THIS DRAWING INCLUDING THE  
DESIGNS IS THE PROPERTY OF  
KONNECT RF AND IS NOT TO  
BE USED FOR ANY PURPOSE  
WITHOUT OUR APPROVAL.