

PART NUMBER

**KCC179924**

REV.

INITIAL

**Electrical Data**

Frequency Range

DC - 35 GHz

VSWR

1.20 to 35 GHz

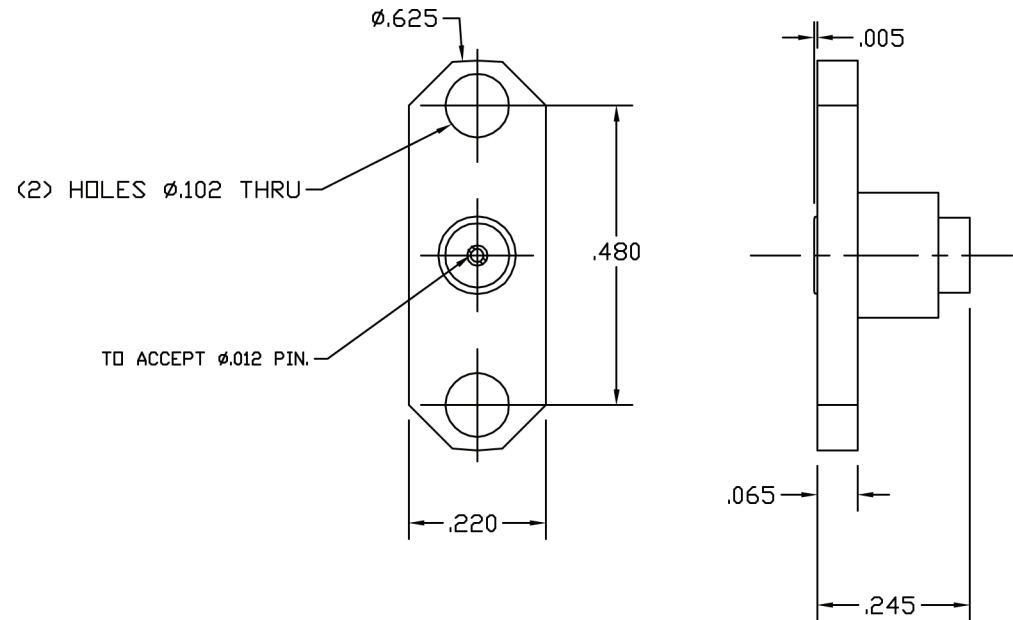
Insertion Loss

 $0.05 \sqrt{\text{Frequency}}$ **RoHS Compliant****Materials**

SST. Corrosion-resistant, Non Magnetic 303, per ASTM  
A484 and A582. Beryllium Copper per ASTM-B-196, QQ-C-530  
PTFE Fluorocarbon per ASTM-D-1710 Type 1

**Finish**

Center Conductors and body components shall be plated per Mil-G-45204  
Type II, Class 1 over Nickel plate per QQ-N-290



VSWR and Frequency Range Specifications  
are for reference and are dependant on cable  
type and other application specific conditions

540 NW University Blvd. Ste. 109  
Port Saint Lucie, Florida, 34986  
1-800-790-5887

PART NUMBER

**KCC179924**

DESCRIPTION

**Cable Termination - 2 Hole Flange Mount  
Solder**

CAGE CODE

**664U0**

SIGNATURE

X

Cable Types

**RG405 (.085 Semi Rigid)**

THIS DRAWING INCLUDING THE  
DESIGNS IS THE PROPERTY OF  
KONNECT RF AND IS NOT TO  
BE USED FOR ANY PURPOSE  
WITHOUT OUR APPROVAL.