

PART NUMBER

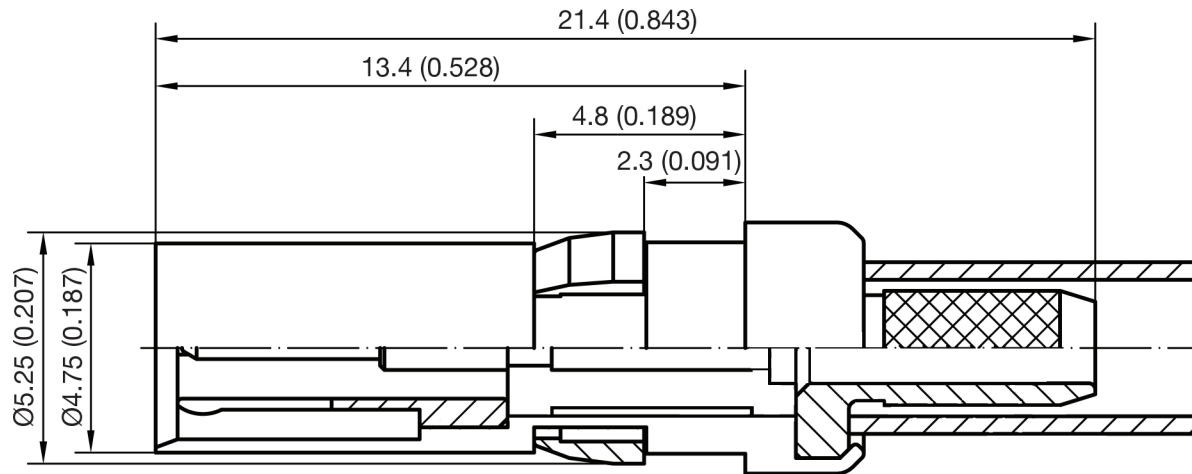
**KCC179526**

REV.

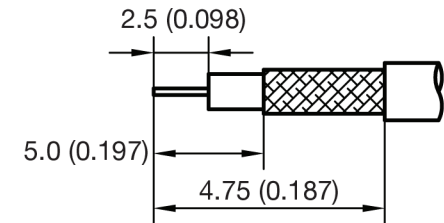
INITIAL

**Electrical Data**

Impedance	50 $\Omega$
Frequency Range	DC - 10 GHz
Return Loss	$\geq 20\text{dB}$ @ DC - 4 GHz
Insertion Loss	$\leq 0.1 \times \sqrt{f[\text{GHz}]} \text{ dB}$
Insulation Resistance	$\geq 1000\text{M}\Omega$
Test Voltage	750 V rms
Working Voltage	250 V rms

**RoHS Compliant**

Recommended Cable Stripping Dim's



VSWR and Frequency Range Specifications  
are for reference and are dependant on cable  
type and other application specific conditions

540 NW University Blvd. Ste. 109  
Port Saint Lucie, Florida, 34986  
1-800-790-5887

PART NUMBER

**KCC179526**

DESCRIPTION

**1.0/2.3 Straight Slide On Male Plug  
Crimp**

CAGE CODE

**664U0**

SIGNATURE

X

Cable Types

**RG 174, 316 & LMR100**

Materials

**Body**  
**Center Contact**  
**Insulator**

**Brass**  
**Be-Cu**  
**PTFE**

**Nickel Plated**  
**Gold Plated**

THIS DRAWING INCLUDING THE  
DESIGNS IS THE PROPERTY OF  
KONNECT RF AND IS NOT TO  
BE USED FOR ANY PURPOSE  
WITHOUT OUR APPROVAL.