

PART NUMBER

KCC178851

REV.

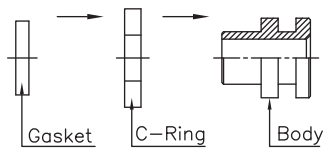
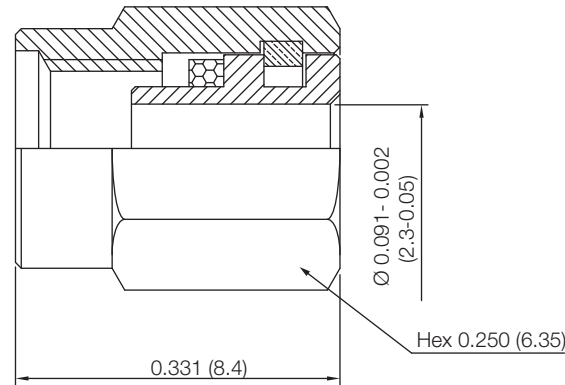
DATE

COMMENTS

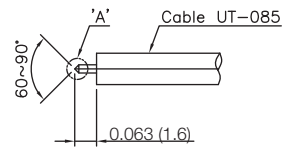
INITIAL

Electrical Data

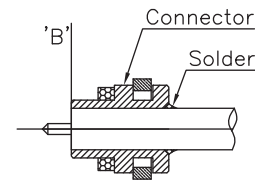
Impedance	50 Ω
Frequency Range	DC-18 GHz
Insulation Resistance	5,000 M Ω
Contact Resistance	< 3m Ω
Work Voltage	335 VRMS
Dielectric Withstanding Voltage	1,000V min

RoHS Compliant

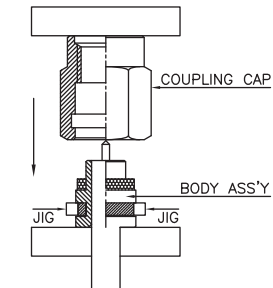
Assemble C-Ring and Gasket on body



Cable Stripping Dimensions



*Assemble the connector and cable
 Caution: Dielectric end of cable and body end should be aligned on B line
 *Solder the connector and cable



Assemble Coupling Cap

VSWR and Frequency Range Specifications are for reference and are dependant on cable type and other application specific conditions

Drawing not to scale. Dimensions for reference only**Units: inches (mm)****Konnect RF**

WWW.KONNECTRF.COM
 1-800-790-5887

PART NUMBER

KCC178851

DESCRIPTION

SSMA Straight Male Plug, Cable Center Conductor, Solder

CAGE CODE

664U0

SIGNATURE

X

THIS DRAWING INCLUDING THE DESIGNS IS THE PROPERTY OF KONNECT RF AND IS NOT TO BE USED FOR ANY PURPOSE WITHOUT OUR APPROVAL.

Cable Types: .085 S/R (RG-405)**Component**

Body
 Coupling Nut
 C-Ring
 Gasket

Material

Stainless Steel
 Stainless Steel
 Stainless Steel
 Silicone Rubber

Plating/Finish

Gold
 Passivated
 Passivated

* C-Ring, Body, Nut, & Gasket Ship Loose