

PART NUMBER

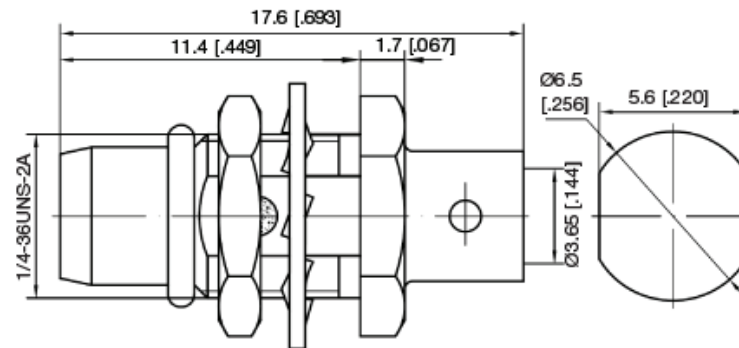
KCC178611

REV.

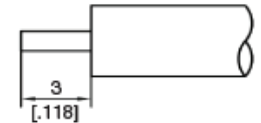
INITIAL

Electrical Data

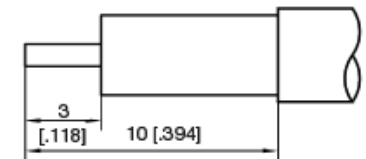
Impedance	50 Ω
Frequency Range	DC - 6 GHz
VSWR	1.35 Max
Insertion Loss	0.15 dB Max.
Insulation Resistance	5000 M Ω
Test Voltage	750 V rms
Working Voltage	480 V rms
Temperature	-55°C + 155°C
Durability	500 Cycles Min.
VSWR	1.2 Max @ 6 GHz

RoHS Compliant

Recommended Cable Stripping Dim's



Without Jacket



With Jacket

VSWR and Frequency Range Specifications are for reference and are dependant on cable type and other application specific conditions

Drawing not to scale. Dimensions for reference only

Konnect RF

WWW.KONNECTRF.COM
1-800-790-5887

PART NUMBER

KCC178611

DESCRIPTION

**BMA Straight Male Jack
Bulkhead Rear Mount - Solder**

CAGE CODE

664U0

SIGNATURE

X

Cable Types .141 S/R (RG 402)**Materials**

Body / Nut
Center Contact
Gasket
O-Ring
Insulator

Brass
Brass
Phos.Bronze
Silicone Rubber
PTFE

Gold Plated
Gold Plated
Gold Plated

THIS DRAWING INCLUDING THE DESIGNS IS THE PROPERTY OF KONNECT RF AND IS NOT TO BE USED FOR ANY PURPOSE WITHOUT OUR APPROVAL.