

PART NUMBER

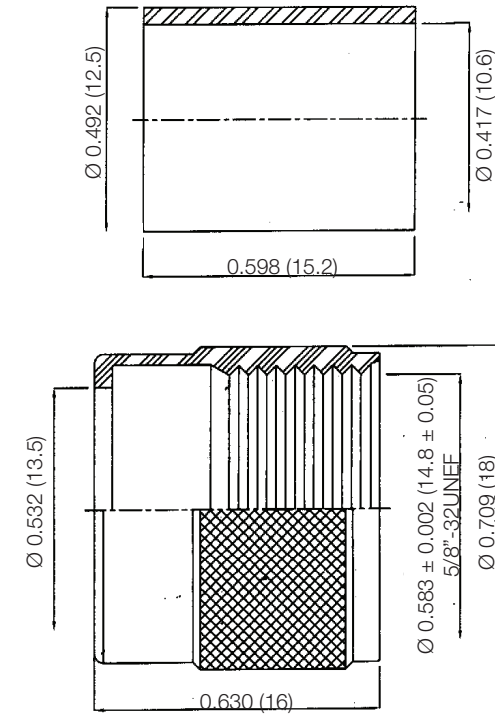
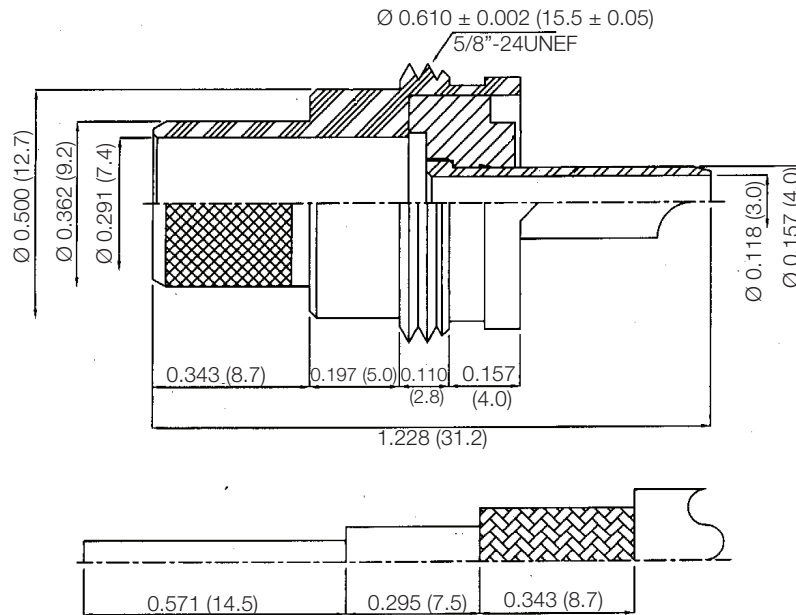
**KCC178550**

REV.

DATE

COMMENTS

INITIAL

**Electrical Data**Impedance 50  $\Omega$ **RoHS Compliant**

Recommended Cable Stripping Dimensions

Drawing not to scale. Dimensions for reference only

Units: inches (mm)

**Konnect RF**WWW.KONNECTRF.COM  
1-800-790-5887

PART NUMBER

**KCC178550**

DESCRIPTION

**UHF Straight Male Plug, Crimp/Solder**

CAGE CODE

**664U0**

SIGNATURE

X

THIS DRAWING INCLUDING THE  
DESIGNS IS THE PROPERTY OF  
KONNECT RF AND IS NOT TO  
BE USED FOR ANY PURPOSE  
WITHOUT OUR APPROVAL.**Cable Types:** LMR-400**Component**Body, Nut, & Ferrule  
Center Contact  
Insulator**Material**Brass  
Brass  
PTFE**Plating**Nickel  
Gold