

PART NUMBER

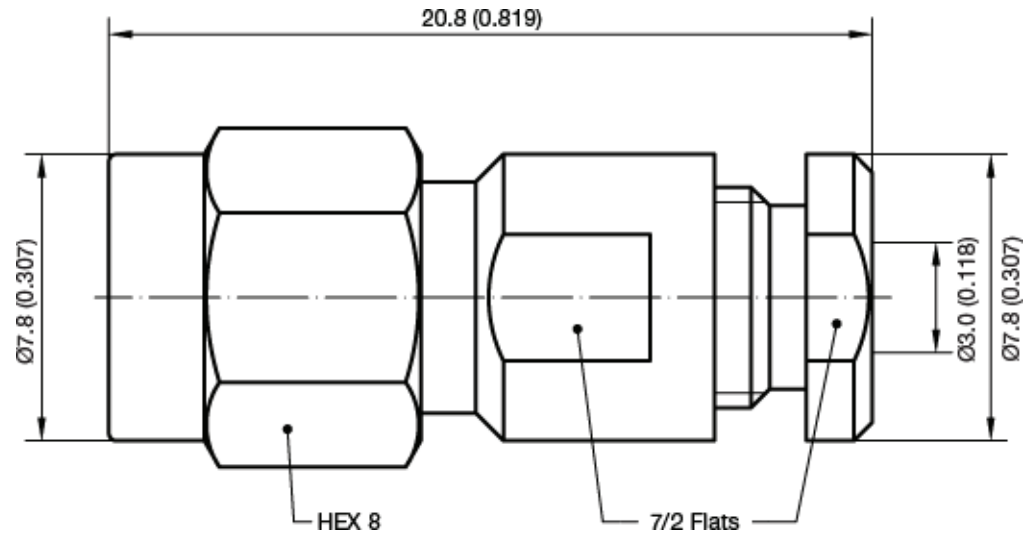
KCC178332

REV.

INITIAL

Electrical Data**RoHS Compliant**

Impedance

50 Ω 

VSWR and Frequency Range Specifications are for reference and are dependant on cable type and other application specific conditions

Drawing not to scale. Dimensions for reference only

WWW.KONNECTRF.COM
540 NW University Blvd. Ste. 109
Port Saint Lucie, Florida, 34986
1-800-790-5887

PART NUMBER

KCC178332

DESCRIPTION

**SMA Straight Male Plug
Clamp**

CAGE CODE

664U0

SIGNATURE

X

Cable Types

MIS-20057/6

Materials

Body
Center Contact
Insulator

Stainless Steel
Brass
PTFE

Passivated
Gold Plated

THIS DRAWING INCLUDING THE DESIGNS IS THE PROPERTY OF KONNECT RF AND IS NOT TO BE USED FOR ANY PURPOSE WITHOUT OUR APPROVAL.