

PART NUMBER

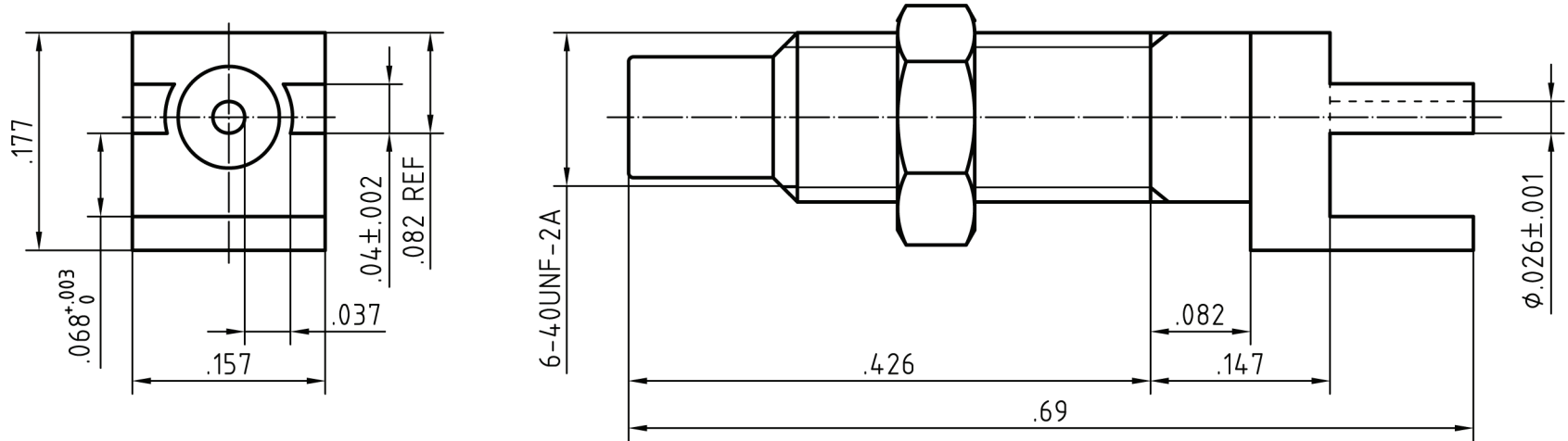
KCC178257

REV.

INITIAL

Electrical Data

Impedance	50 Ω
Frequency Range	DC - 12.4 GHz
VSWR	1.25 Max. @ DC - 3 GHz
Insulation Resistance	1000M Ω Min.
Test Voltage	500 V rms
Working Voltage	250 V rms
Insertion Loss	$0.05 \times \sqrt{f[\text{GHz}]}$

RoHS Compliant

VSWR and Frequency Range Specifications are for reference and are dependant on cable type and other application specific conditions

Drawing not to scale. Dimensions for reference only

WWW.KONNECTRF.COM
540 NW University Blvd. Ste. 109
Port Saint Lucie, Florida, 34986
1-800-790-5887

PART NUMBER

KCC178257

DESCRIPTION

**SSMC Straight Male Jack - Edge Mount
PC Board Receptacle**

CAGE CODE

664U0

SIGNATURE

X

THIS DRAWING INCLUDING THE DESIGNS IS THE PROPERTY OF KONNECT RF AND IS NOT TO BE USED FOR ANY PURPOSE WITHOUT OUR APPROVAL.

Materials

Body	Stainless Steel	Gold Plated
Nut	Brass	Gold Plated
Center Contact	Be-Cu	Gold Plated
Insulator	PTFE	