

PART NUMBER

**KCC177989**

REV.

DATE

COMMENTS

INITIAL

A

10/15/19

Updated Electrical Specs.

*MP***Electrical Data**

Impedance	50 $\Omega$
Frequency Range	DC - 12.4 GHz.
Contact Current	DC 2.0A Max
Insertion Loss	0.05 $\sqrt{f}$ (GHz) dB
Working Voltage	
Semi-Rigid Cable	1,000V
Flexible Cable	750V
Contact Resistance	
Center Contact	3.0m $\Omega$
Outer Contact	2.5m $\Omega$
Insulation Resistance	5,000 M $\Omega$ min
Voltage Rating	375 VRMS
VSWR	$\leq 1.20 + 0.02f$ (GHz)
RF Leakage	-60 dBm min between 2-3 GHz

**Mechanical Data**

Temperature Range:	-65 $^{\circ}$ C - 155 $^{\circ}$ C
Coupling Nut Torque	90Ncm-110Ncm
Coupling Nut Retention Force	$\geq 200$ N
Life	500 Mating Cycles
Contact Captivation	$\geq 27$ N

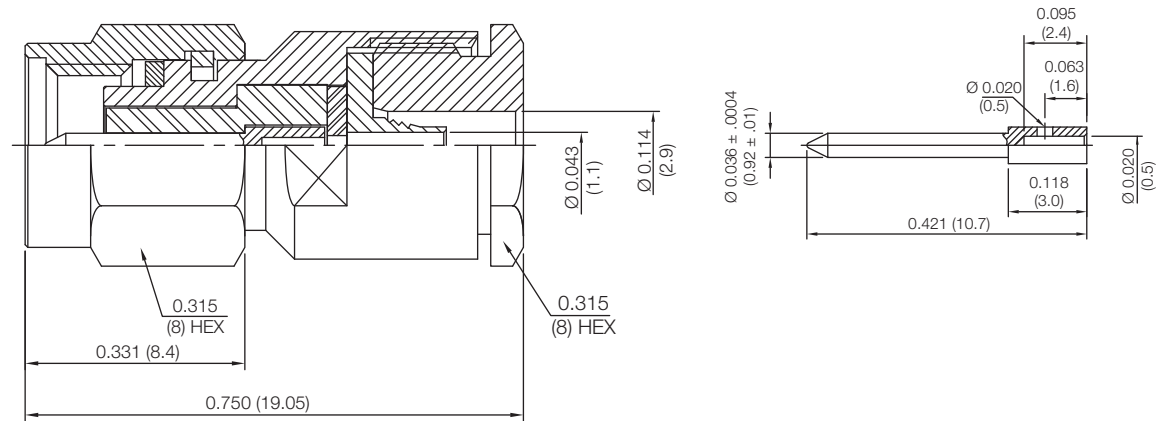
**Environmental Data**

Corrosion Resistance	MIL-STD-202, Method 101, Condition B.
Moisture Resistance	MIL-STD-202, Method 106
Thermal Shock	MIL-STD-202, Method 107, Condition B
Vibration	MIL-STD-202, Method 204, Condition D
Shock	MIL-STD-202, Method 213, Condition I

**VSWR and Frequency Range Specifications are for reference and are dependant on cable type and other application specific conditions**  
**Drawing not to scale. Dimensions for reference only**

Units: inches (mm)

RoHS Compliant

**Konnect RF**

WWW.KONNECTRF.COM  
 1-800-790-5887

PART NUMBER

**KCC177989**

DESCRIPTION

**SMA Straight Male Plug, Clamp**

CAGE CODE

**664U0**

SIGNATURE

X

**Cable Types:** Raychem 5028A3318**Component**

Body, Clamp Nut, Coupling Nut  
 Center Contact  
 Insulator

**Material**

Stainless  
 Brass  
 PTFE

**Plating/Finish**

Passivated  
 Gold

THIS DRAWING INCLUDING THE DESIGNS IS THE PROPERTY OF KONNECT RF AND IS NOT TO BE USED FOR ANY PURPOSE WITHOUT OUR APPROVAL.