

PART NUMBER

KCC177910

REV.

A

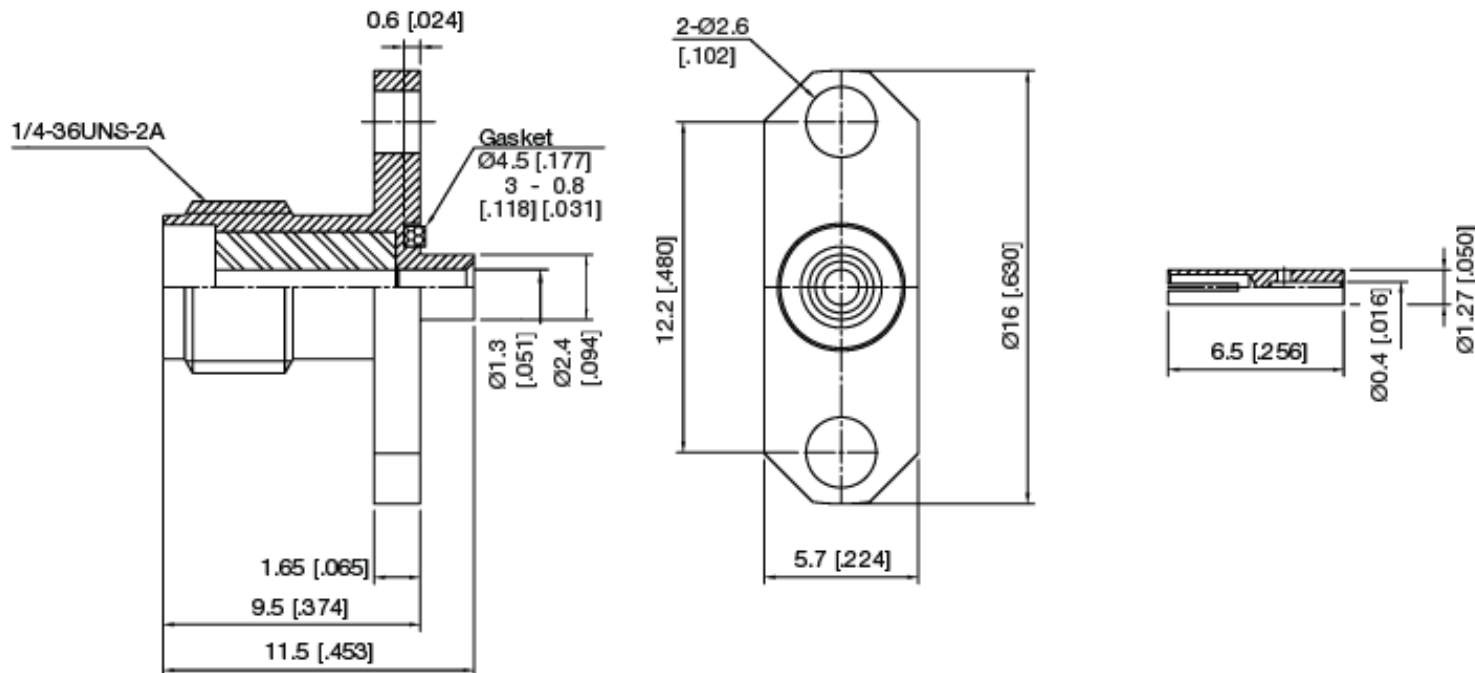
2/29/12

Added Seal

INITIAL

*MF***Electrical Data**

Impedance

50 Ω **RoHS Compliant**

VSWR and Frequency Range Specifications
are for reference and are dependant on cable
type and other application specific conditions

Drawing not to scale. Dimensions for reference only

WWW.KONNECTRF.COM
540 NW University Blvd. Ste. 109
Port Saint Lucie, Florida, 34986
1-800-790-5887

PART NUMBER

KCC177910

DESCRIPTION

SMA Straight Female Jack
2 Hole Flange Mount - Solder

CAGE CODE

664U0

SIGNATURE

X

Cable Types .047 Conformable

Materials

Body
Center Contact
Gasket
Insulator

Brass
Be.Cu
Silicone Rubber
PTFE

Gold Plated
Gold Plated

THIS DRAWING INCLUDING THE
DESIGNS IS THE PROPERTY OF
KONNECT RF AND IS NOT TO
BE USED FOR ANY PURPOSE
WITHOUT OUR APPROVAL.