

PART NUMBER

**KCC177567**

REV.

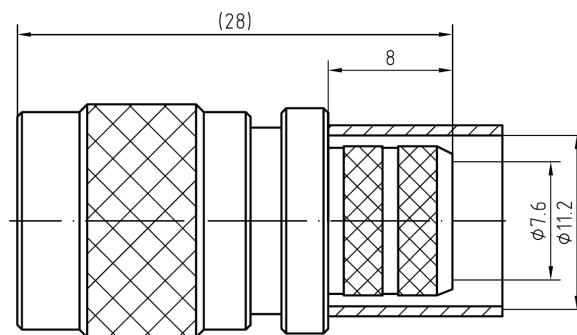
INITIAL

**Electrical Data**

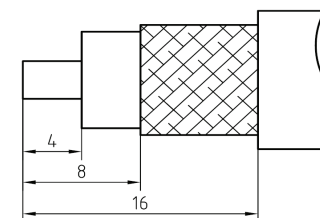
Impedance 50  $\Omega$   
 Frequency Range DC - 10 GHz.  
 Return Loss 30 dB DC - 2.5 GHz  
 20 dB 2.5 - 6 GHz  
 Insertion Loss  $\leq 0.05$  dB, DC- 4 GHz  
 Insulation Resistance 5,000 M  $\Omega$   
 Test Voltage 1,500 VRMS  
 Working Voltage 500 VRMS

**Mechanical Data**

Durability 500 Cycles Min.  
 Temperature Range: -55 °C - 155 °C



Recommended Cable Stripping Dim's



**VSWR and Frequency Range Specifications**  
 are for reference and are dependant on cable  
 type and other application specific conditions

Drawing not to scale. Dimensions for reference only

Units: mm

**Konnnect RF**

WWW.KONNECTRF.COM  
 1-800-790-5887

PART NUMBER

**KCC177567**

DESCRIPTION

**TNC Straight Male Plug, Crimp**

CAGE CODE

**664U0**

SIGNATURE

X

THIS DRAWING INCLUDING THE  
 DESIGNS IS THE PROPERTY OF  
 KONNECT RF AND IS NOT TO  
 BE USED FOR ANY PURPOSE  
 WITHOUT OUR APPROVAL.

**Cable Types:** RG-214**Component**

Body & Nut  
 Center Contact  
 Ferrule  
 Insulator  
 O-Ring

**Material**

Brass  
 Brass  
 Copper  
 PTFE  
 Silicone Rubber

**Plating**

Nickel  
 Gold  
 Nickel