

PART NUMBER

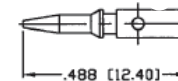
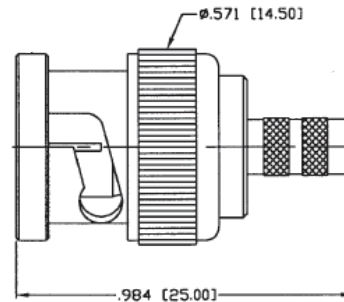
KCC177244

REV.

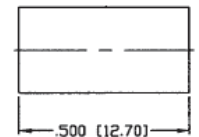
INITIAL

Electrical Data

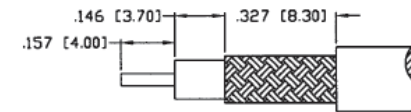
Impedance 50 Ω
 Frequency Range DC - 4 GHz
 VSWR 1.3 Max.
 Working Voltage 500 VRMS @ Sea Level
 Temperature Range -65°C to 85°C
 Insulation Resistance 5k M Ω Min.

RoHS Compliant

RECOMMENDED
CRIMP DIE: .068"



RECOMMENDED
CRIMP DIE: .213"



RECOMMENDED
STRIPPING DIMENSIONS

VSWR and Frequency Range Specifications
 are for reference and are dependant on cable
 type and other application specific conditions

Drawing not to scale. Dimensions for reference only

Units: Inches (mm)

WWW.KONNECTRF.COM
 1-800-790-5887

PART NUMBER

KCC177244

DESCRIPTION

BNC Straight Male Plug, Crimp

CAGE CODE

664U0

SIGNATURE

X

THIS DRAWING INCLUDING THE
 DESIGNS IS THE PROPERTY OF
 KONNECT RF AND IS NOT TO
 BE USED FOR ANY PURPOSE
 WITHOUT OUR APPROVAL.

Cable Types: RG-55, 142, 223

Component

Body & Shell
 Washer & Ferrule
 Pin
 Spring
 Retaining Ring
 Gasket
 Insulator

Material

Brass
 Brass
 Brass
 Sk-5
 Brass
 Silicone Rubber
 PTFE

Plating

Nickel
 Nickel
 Gold
 Nickel
 Nickel