

PART NUMBER

**KCC177026**

REV.

DATE

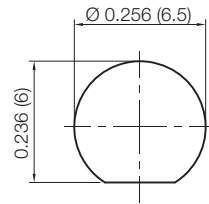
COMMENTS

INITIAL

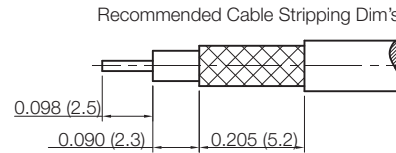
**Electrical Data**

Impedance

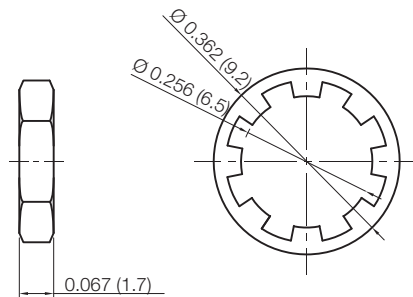
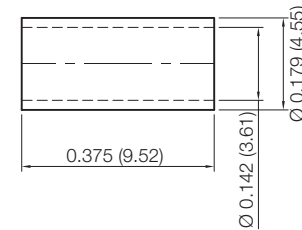
50 Ω

**RoHS Compliant**

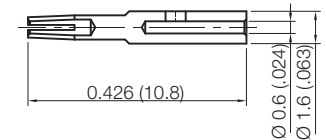
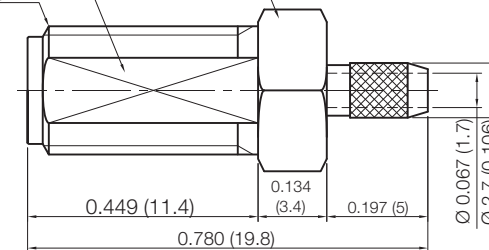
Recommended Mounting Hole



Recommended Cable Stripping Dim's

On Flat 0.230 (5.85)  
1/4-36UNS-2A

HEX 0.315 (8)



1. Crimped Ferrule HEX Crimp Size .151 (3.83)
2. Contact Pin to Solder
3. Max Panel Thickness of .126 (3.20)

Drawing not to scale. Dimensions for reference only

Units: inches (mm)

**Konnect RF**

WWW.KONNECTRF.COM  
1-800-790-5887

PART NUMBER

**KCC177026**

DESCRIPTION

**SMA Straight Female Jack, Bulkhead Rear Mount, Crimp**

CAGE CODE

**664U0**

SIGNATURE

X

**Cable Types:** RG-316 DS**Component**

Body, Ferrule, Washer, & Nut  
Center Contact  
Insulator

**Material**

Brass  
BeCu  
PTFE

**Plating**

Gold  
Gold

THIS DRAWING INCLUDING THE  
DESIGNS IS THE PROPERTY OF  
KONNECT RF AND IS NOT TO  
BE USED FOR ANY PURPOSE  
WITHOUT OUR APPROVAL.