

PART NUMBER

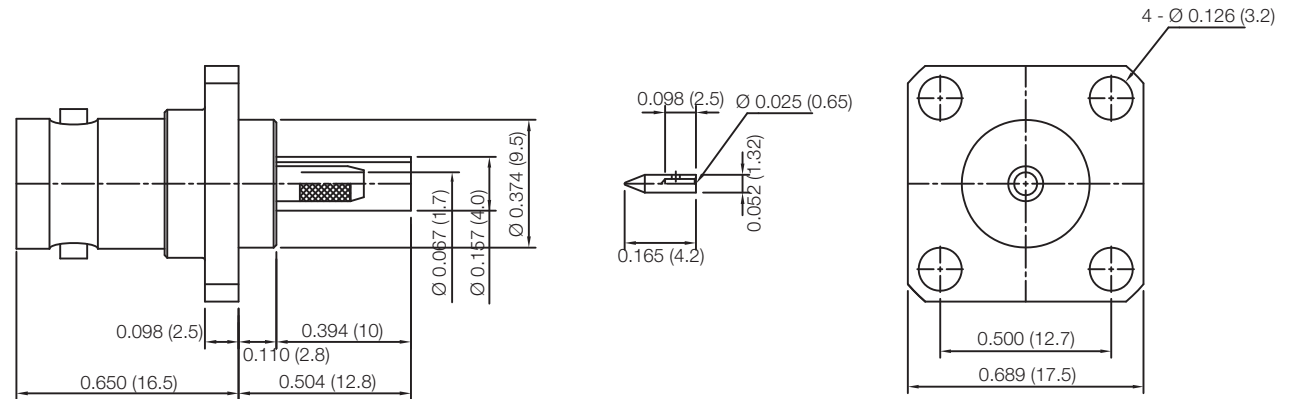
KCC177019

REV.

DATE

COMMENTS

INITIAL

Electrical DataImpedance 50 Ω **RoHS Compliant**

Drawing not to scale. Dimensions for reference only

Units: inches (mm)

Konnect RFWWW.KONNECTRF.COM
1-800-790-5887

PART NUMBER

KCC177019

DESCRIPTION

BNC Straight Female Jack, 4 Hole Flange Mount, Crimp

CAGE CODE

664U0

SIGNATURE

X

THIS DRAWING INCLUDING THE DESIGNS IS THE PROPERTY OF KONNECT RF AND IS NOT TO BE USED FOR ANY PURPOSE WITHOUT OUR APPROVAL.

Component

Body & Ferrule
Center Contact
Cable Insert Pin
Insulator

Material

Brass
BeCu
Brass
PTFE

Plating

Nickel
Gold
Gold