

PART NUMBER

KAT177774-40

REV.

DATE

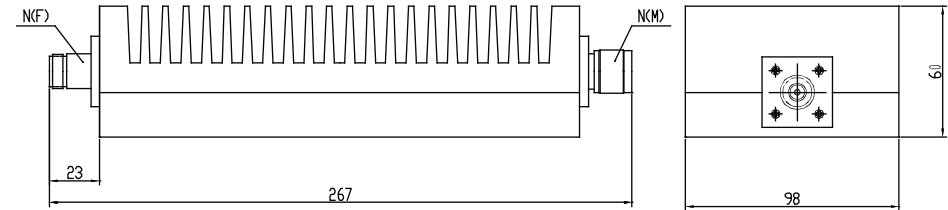
COMMENTS

INITIAL

Electrical Data**RoHS Compliant**

Impedance 50 Ω
 Average Power 200W average to 25°C ambient temperature, derated linearly to 20W @ 125°C
 Peak Power 10KW (5 μ s pulse width with 2% duty cycle)

Model Number	Frequency Range(GHz)	Attenuation Value & Accuracy (dB)				Max VSWR
		10	20	30	40-50	
KAT17777-40	DC-3	± 1.25	± 1.25	± 0.8	± 0.8	1.35

**Mechanical Data**

Temperature Range: -55 °C - 125°C

Drawing not to scale. Dimensions for reference only

Units: mm Tolerance $\pm 3\%$

WWW.KONNECTRF.COM
 1-800-790-5887

PART NUMBER

KAT177774-40

DESCRIPTION

Fixed Attenuator, N Male/Female

CAGE CODE

664U0

SIGNATURE

X

THIS DRAWING INCLUDING THE DESIGNS IS THE PROPERTY OF KONNECT RF AND IS NOT TO BE USED FOR ANY PURPOSE WITHOUT OUR APPROVAL.

Component

Body
 Center Contact
 Heat Sink

Material

Brass
 Brass
 Black Anodized Aluminum

Plating

Nickel

Gold