

PART NUMBER

KAT177543

REV.

DATE

COMMENTS

INITIAL

Electrical Data

Impedance 50 Ω
 Frequency Range DC - 3 GHz.
 Attenuation 0-110 dB in 1 dB Steps

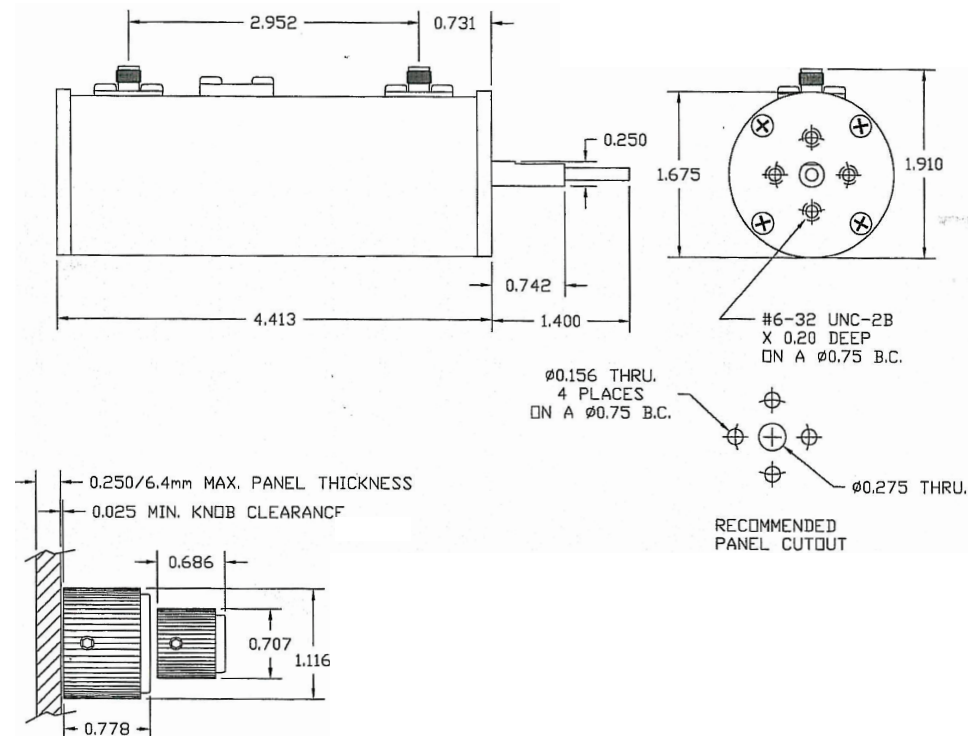
Attenuation Accuracy

dB	ACCURACY \pm dB
DC-1 GHz	0.25
1-2 GHz	0.35
2-3 GHz	0.50

Power 2W Average to 25 °C ambient temperature.
 Peak Power 1 KW (5 μ sec Pulse Width; 0.5% duty cycle)
 VSWR \leq 1.30 @ DC - 1 GHz
 \leq 1.40 @ 1 - 2 GHz
 \leq 1.50 @ 2 - 3 GHz

Mechanical Data

Temperature Range -55 °C - 100 °C

RoHS Compliant

Drawing not to scale. Dimensions for reference only

Units: Inches

Konnect RF

WWW.KONNECTRF.COM
 1-800-790-5887

PART NUMBER

KAT177543

DESCRIPTION

Dual Rotary Attenuator, N Female Jack to N Female Jack

CAGE CODE

664U0

SIGNATURE

X

THIS DRAWING INCLUDING THE
 DESIGNS IS THE PROPERTY OF
 KONNECT RF AND IS NOT TO
 BE USED FOR ANY PURPOSE
 WITHOUT OUR APPROVAL.

Component

Body
 Center Contact
 Housing

Material

Stainless Steel
 BeCu
 Aluminum

Plating/Finish

Passivated
 Gold
 Black Anodized