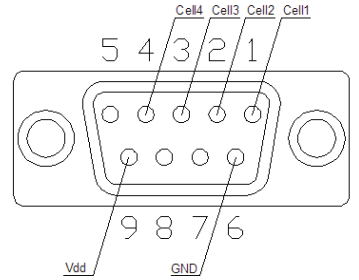
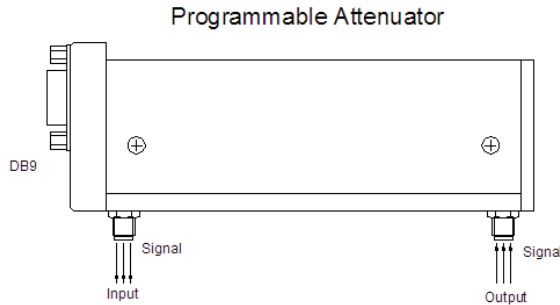


Average Power:	1W (100W pulse with 10μS width)
Frequency Range:	DC~4 GHz
Operating Voltage:	24V
Control Voltage:	3.3~5V (Pulse width 50mS~1S)
Control current:	0.02-0.8mA
Source operation current:	≥2A
State switch time:	≤20ms
Repeatability of attenuation:	0.05dB
Working life:	10 ⁶
Connector Type:	SMA
Operation temperature:	-20°C~+70°C
Storage temperature:	-55°C~+85°C



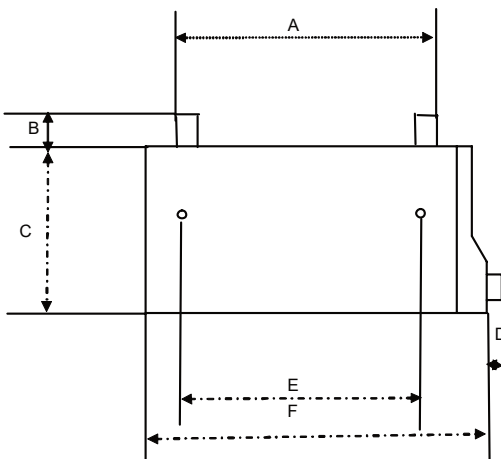
ELECTRICAL SPECIFICATIONS

Frequency Range (GHz)	Attenuation Value & Accuracy (dB)				VSWR	Insertion Loss(dB)
	11	50	90	110		
DC-8	±0.8	±1.6	±3.2	±4	≤1.6	0.6+0.09/GHz
DC-12.4	±0.8	±2.1	±3.2	±4.5	≤1.6	
DC-18	±1.0	±2.1	±3.7	±4.5	≤1.75	

PRODUCT REFERENCE

Model Number	Attenuation Value(dB)	Attenuation Steps(dB)	Cells Value	Cell No.1(dB)		Cell No.2(dB)		Cell No.3(dB)		Cell No.4(dB)	
				Through	Att. Steps	Through	Att. Steps	Through	Att. Steps	Through	Att. Steps
KAT177517	110	10	4	0	10	0	40	0	20	0	40

Outline and Installation Size



Units: mm

Dimensions	A	B*	C	D	E	F
Manual 4 cells	114.4	8.3	38	29.2	103.4	135.8