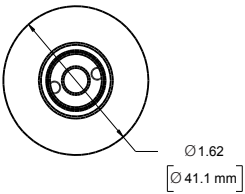
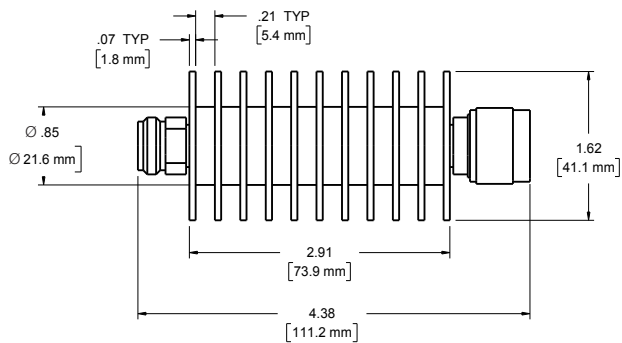


# KAT177492-XX

Fixed Attenuator, N Male/Female , 50 Ohm, DC-8.5 GHz, 50 Watts



Designed to comply with MIL-DTL-3933 environmental specifications.

**Dimensions & Weight:** 0.28 kg; Length: 74.00 mm

**Connection & Mounting:** Type N M/F connectors per MIL-STD-348A, interface dimensions mate non-destructively with MIL-PRF-39012.

**Construction:** Black aluminum alloy body with passivated stainless steel connectors. Gold plated beryllium copper or Stainless Steel contacts. RoHs Compliant

**Calibration:** Insertion Loss and VSWR performed across frequency range. Calibration test data available at additional cost.

**Power:** Medium Power (20W - 100W)

**Average Power Description:** Maximum rated average power to 25°C ambient temperature, de-rated linearly to 5 W at 125°C.

**Average Power:** 50

**Peak Power:** 5 kW peak (5 µsec pulse width, 0.5% duty cycle)

**Power Coefficient:** <0.0005 dB/dB/W

**Directionality:** Bidirectional

**Frequency Range:** dc to 8.5

**Attenuation Range:** 3 to 40 (50 dB available, unidirectional)

**Attenuation Accuracy:**

Attenuation Range	3 to 20 dB	21 to 30 dB	40 dB
Attenuation Accuracy (+/- dB)	0.75	1.0	1.2

**Nominal Impedance:** 50

**Temperature Range:** -55°C to +125°C

**Temperature Coefficient:** <0.0004 dB/dB/C

**VSWR:**

Frequency Range (GHz)	dc to 4.0	4.0 to 8.5
VSWR (max)	1.20	1.30