

PART NUMBER

KAT177345

REV.

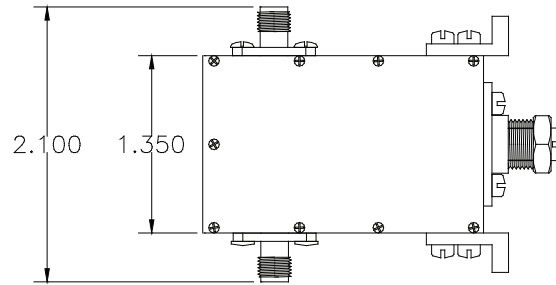
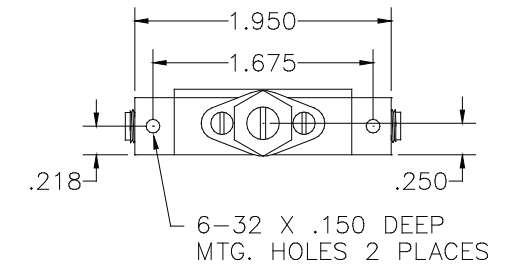
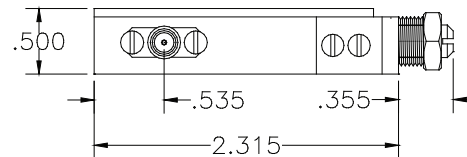
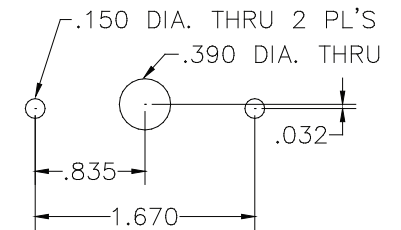
INITIAL

Electrical Data

Impedance 50 Ω
 Frequency Range 2 GHz \pm 50 MHz
 Attenuation Range 0-10 dB Max.
 Insertion Loss 0.5 dB
 Maximum SWR 2.0:1
 Average Power 5 Watts

RoHS Compliant**Mechanical Data**

Connectors SMA Female
 Mounting Configuration Panel Mount
 Drive Screwdriver Adjustment
 with Locking Nut
 Number of Turns Approximately 18 Shaft Turns
 from minimum to maximum
 attenuation

**PANEL MOUNTING INSTRUCTIONS**

VSWR and Frequency Range Specifications
 are for reference and are dependant on cable
 type and other application specific conditions

Drawing not to scale. Dimensions for reference only

WWW.KONNECTRF.COM
 540 NW University Blvd. Ste. 109
 Port Saint Lucie, Florida, 34986
 1-800-790-5887

PART NUMBER

KAT177345

DESCRIPTION

**Continuously Variable Attenuator
SMA Female**

CAGE CODE

664U0

SIGNATURE

X

THIS DRAWING INCLUDING THE
 DESIGNS IS THE PROPERTY OF
 KONNECT RF AND IS NOT TO
 BE USED FOR ANY PURPOSE
 WITHOUT OUR APPROVAL.