

PART NUMBER

KAT177325

REV.

DATE

COMMENTS

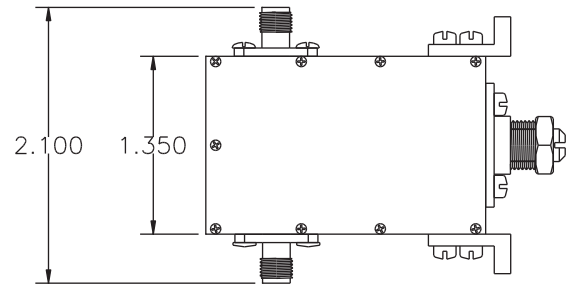
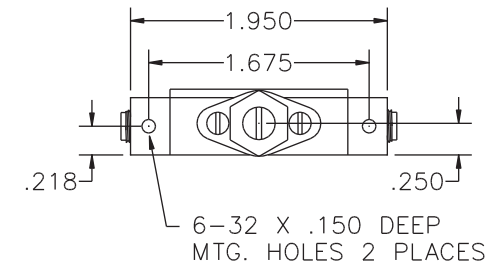
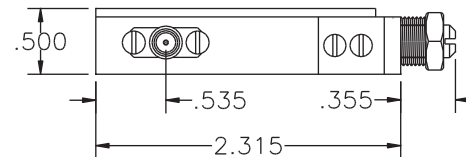
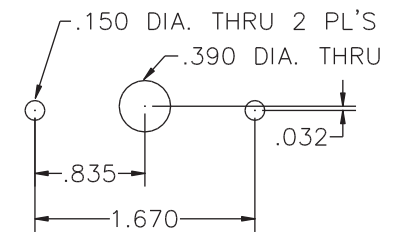
INITIAL

Electrical Data

| | |
|-------------------|---------------|
| Impedance | 50 Ω |
| Frequency Range | 2- 4 GHz. |
| Insertion Loss | \leq 0.5 dB |
| Average Power | 5 Watts |
| Attenuation Range | 0-20 dB Min. |
| VSWR | \leq 1.5 |

Mechanical Data

| | |
|-------|--|
| Drive | Screwdriver Adjustment with Locking Nut |
|-------|--|

RoHS CompliantPANEL MOUNTING
INSTRUCTIONS

Drawing not to scale. Dimensions for reference only

Units: inches

Konnect RFWWW.KONNECTRF.COM
1-800-790-5887

PART NUMBER

KAT177325

DESCRIPTION

Continuously Variable Attenuator, SMA Female

CAGE CODE

664U0

SIGNATURE

X

THIS DRAWING INCLUDING THE
DESIGNS IS THE PROPERTY OF
KONNECT RF AND IS NOT TO
BE USED FOR ANY PURPOSE
WITHOUT OUR APPROVAL.