

PART NUMBER

**KAT177324**

REV.

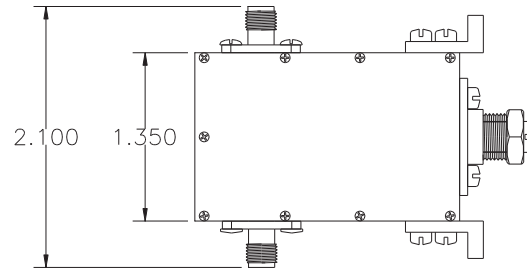
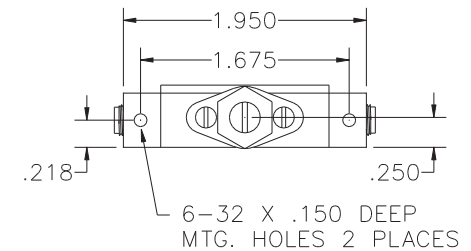
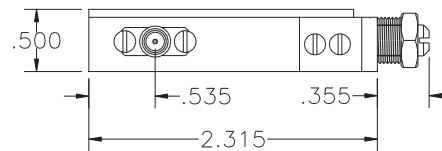
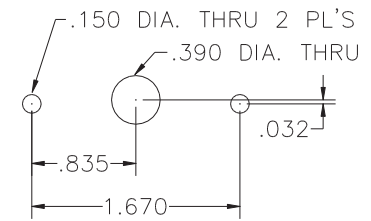
DATE

COMMENTS

INITIAL

**Electrical Data**

Impedance	50 $\Omega$
Frequency Range	2.7 - 2.9 GHz.
Insertion Loss	$\leq$ 0.5 dB
Attenuation Range	0 - 20 dB Minimum
VSWR	$\leq$ 1.5
Average Power	5 Watts

**RoHS Compliant**PANEL MOUNTING  
INSTRUCTIONS

Drawing not to scale. Dimensions for reference only

Units: inches

**Konnect RF**WWW.KONNECTRF.COM  
1-800-790-5887

PART NUMBER

**KAT177324**

DESCRIPTION

**Variable Attenuator, SMA Female, Continuously Variable**

CAGE CODE

**664U0**

SIGNATURE

X

THIS DRAWING INCLUDING THE DESIGNS IS THE PROPERTY OF KONNECT RF AND IS NOT TO BE USED FOR ANY PURPOSE WITHOUT OUR APPROVAL.