

PART NUMBER

KAT177287

REV.

INITIAL

Electrical Data

Impedance 50 Ω
 Frequency Range DC - 2.5 GHz
 Attenuation Range 0-50 dB in 1 dB steps

VSWR

Input Port 1.4:1 Max.
 Output Port 1.6:1 Max.

Attenuation Accuracy

+0.2 dB or 1% DC-500 MHz
 +0.3 dB or 3% 500-1000 MHz
 +0.4 dB or 3% 1000-2500 MHz

Insertion Loss

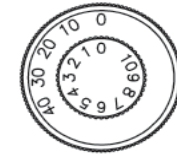
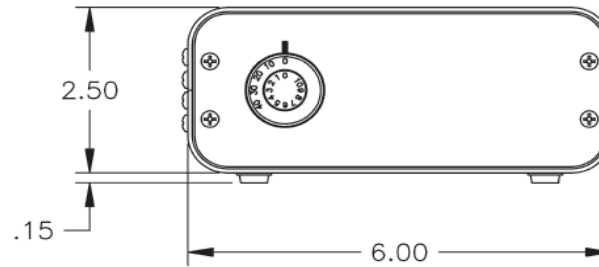
10.7 dB Max.

RF Input Power
(UNI-DIRECTIONAL)

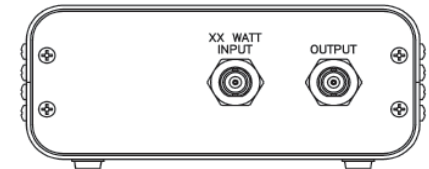
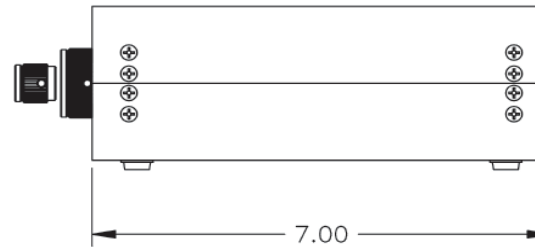
10 Watts Average
 1000 Watts Peak (1 microsecond)

Reverse Power

2 Watts Average

RoHS Compliant

KNOB DETAIL

RF CONNECTORS
2-PLACES

Drawing not to scale. Dimensions for reference only

Units: mm

Konnnect RF

WWW.KONNECTRF.COM
 1-800-790-5887

PART NUMBER

KAT177287

DESCRIPTION

Bench Top Rotary Attenuator, SMA Female Jack

CAGE CODE

664U0

SIGNATURE

X 

THIS DRAWING INCLUDING THE
 DESIGNS IS THE PROPERTY OF
 KONNECT RF AND IS NOT TO
 BE USED FOR ANY PURPOSE
 WITHOUT OUR APPROVAL.