

KAT177274

Programmable Attenuator, Manual, SMA, 4 Cell Model

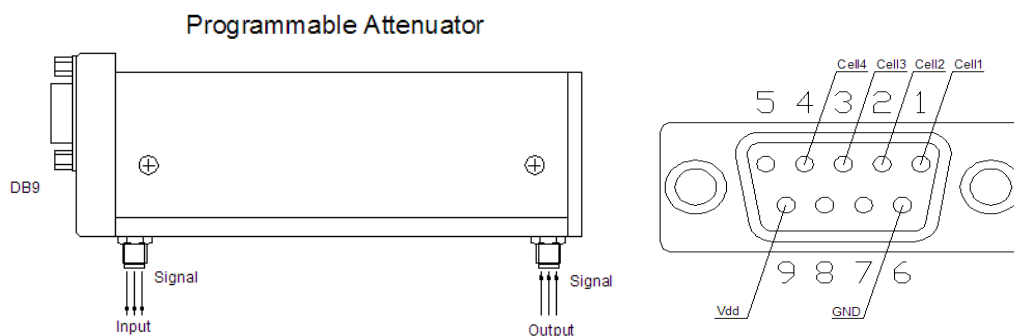
DESCRIPTION

Average Power:	1W (100W pulse with 10μS width)
Frequency Range:	DC~18GHz
Operating Voltage:	24V
Control Voltage:	3.3~5V (Pulse width 50mS~1S)
Control current:	0.02-0.8mA
Source operation current:	≥2A
State switch time:	≤20ms
Repeatability of attenuation:	0.05dB
Working life:	10 ⁶
Connector Type:	SMA
Operation temperature:	-20°C~+70°C
Storage temperature:	-55°C~+85°C
Dimensions:	Mechanical: 157.5×50×41mm Programmable: 143.5×50×41.5mm
Weight:	Mechanical: 355g (4cells), Programmable:420g (4cells)

ELECTRICAL SPECIFICATIONS

Frequency Range (GHz)	Attenuation Value & Accuracy (dB)				VSWR	Insertion Loss(dB)
	11	50	90	110		
DC-8	±0.8	±1.6	±3.2	±4	≤1.6	0.6+0.09/GHz
DC-12.4	±0.8	±2.1	±3.2	±4.5	≤1.6	
DC-18	±1.0	±2.1	±3.7	±4.5	≤1.75	

ELECTRICAL SCHEMATIC & MECHANICAL



Outline and Installation Size

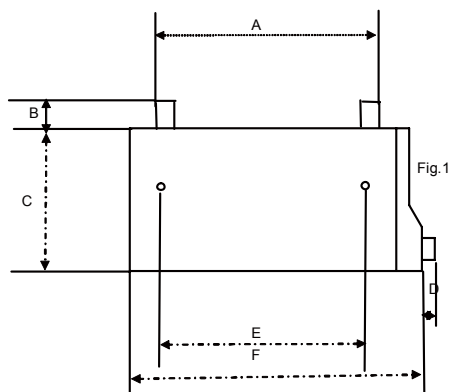


Table2: Outline and Installation Size of Different Model

Dimensions	A	B*	C	D	E	F
Manual 4 cells	114.4	8.3	38	29.2	103.4	135.8
Programmable 4 cells	114.4	8.3	44.3	6	103.4	135.8

Units: (mm)