

PART NUMBER

**KAT177157-XX**

REV.

DATE

COMMENTS

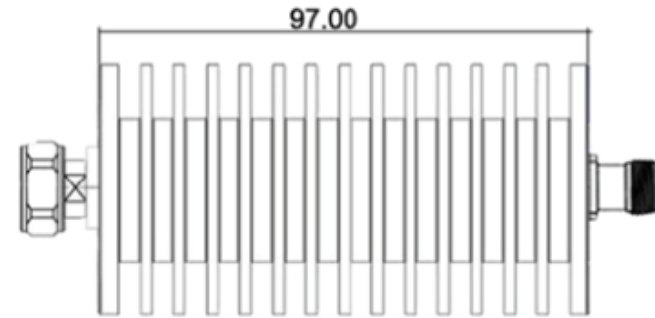
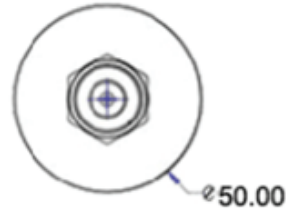
INITIAL

**Electrical Data**

Impedance	50 $\Omega$
Frequency Rating	DC-4.0 GHz
Power Rating	50 Watts Average
VSWR	1.3 Max
Attenuation Value	1-10dB $\pm$ 0.5 dB 15-30dB $\pm$ 1dB 40dB $\pm$ 1.5dB

**Mechanical Data**

Temperature Range:	-55 $^{\circ}$ C - 125 $^{\circ}$ C
--------------------	-------------------------------------

**RoHS Compliant**

Drawing not to scale. Dimensions for reference only

Units: mm

\*\*Substitute Attenuation Value for XX

WWW.KONNECTRF.COM  
1-800-790-5887

PART NUMBER

**KAT177157-XX**

DESCRIPTION

**Fixed Attenuator, 7/16 Din Male to N Female**

CAGE CODE

**664U0**

SIGNATURE

X

THIS DRAWING INCLUDING THE  
DESIGNS IS THE PROPERTY OF  
KONNECT RF AND IS NOT TO  
BE USED FOR ANY PURPOSE  
WITHOUT OUR APPROVAL.