

PART NUMBER

KAD187106

REV.

DATE

COMMENTS

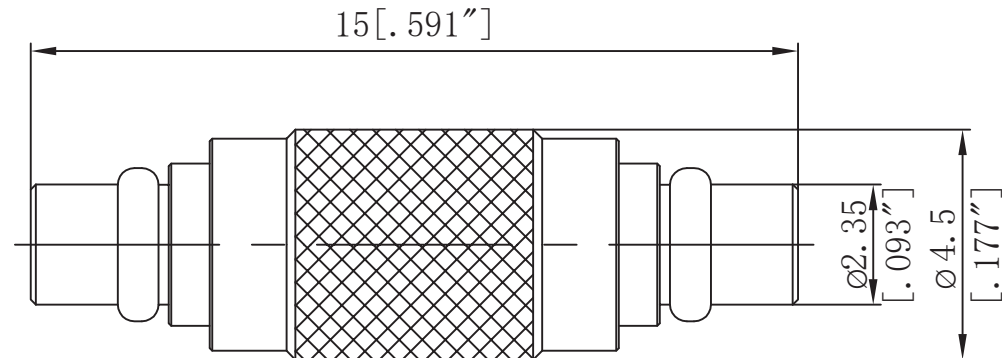
INITIAL

RoHS Compliant**Electrical Data**

Impedance 50 Ω
 Frequency Range DC - 6 GHz.
 Insertion Loss 0.2dB @ 6GHz
 Insulation Resistance 5,000 M Ω min
 Dielectric Withstanding Voltage 1,000V Max At Sea level
 VSWR \leq 1.15 @ 6GHz

Mechanical Data

Temperature Range: -55 $^{\circ}$ C - 165 $^{\circ}$ C
 Durability 500 Cycles



Drawing not to scale. Dimensions for reference only

Units: mm (Inches)

Konnect RF

WWW.KONNECTRF.COM
 1-800-790-5887

PART NUMBER

KAD187106

DESCRIPTION

Adapter, In Series, MMCX Straight Male Plug to Male Plug

CAGE CODE

664U0

SIGNATURE

X

THIS DRAWING INCLUDING THE
 DESIGNS IS THE PROPERTY OF
 KONNECT RF AND IS NOT TO
 BE USED FOR ANY PURPOSE
 WITHOUT OUR APPROVAL.

Component

Body
 Center Contact
 Insulator

Material

Brass
 BeCu
 PTFE

Plating

Gold
 Gold