

PART NUMBER

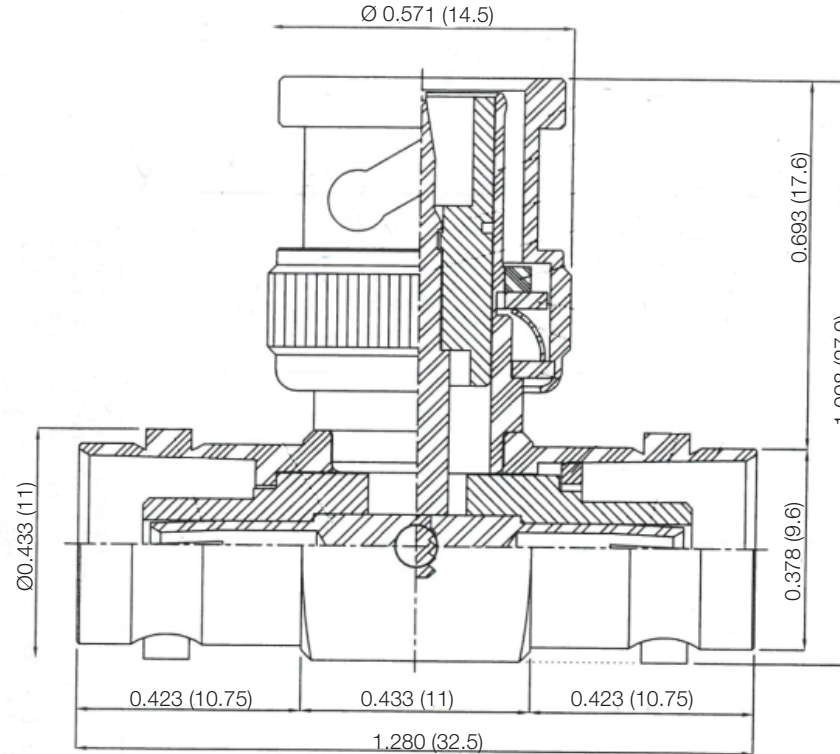
**KAD179751**

REV.

DATE

COMMENTS

INITIAL

**Electrical Data**Impedance 50  $\Omega$ **RoHS Compliant**

Drawing not to scale. Dimensions for reference only

Units: inches (mm)

**Konnnect RF**WWW.KONNECTRF.COM  
1-800-790-5887

PART NUMBER

**KAD179751**

DESCRIPTION

**Adapter, In-Series, T-type, BNC Female Jack to  
Male Plug to Female Jack**

CAGE CODE

**664U0**

SIGNATURE

X

THIS DRAWING INCLUDING THE  
DESIGNS IS THE PROPERTY OF  
KONNECT RF AND IS NOT TO  
BE USED FOR ANY PURPOSE  
WITHOUT OUR APPROVAL.

**Component**

Body  
Center Contact  
Shell  
Washer  
Insulator

**Material**

Brass  
Brass  
Brass  
Brass  
POM

**Plating**

Nickel  
Gold  
Nickel  
Nickel

\*Gold Plating (2 $\mu$ in-3 $\mu$ in) /Nickel Underplating (70 $\mu$ in-80 $\mu$ in)