

PART NUMBER

KAD179306

REV.

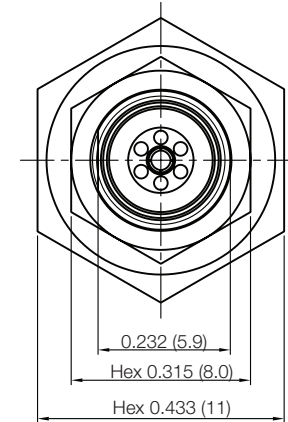
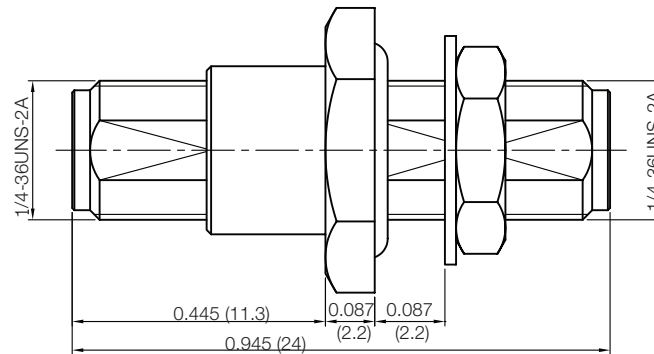
DATE

COMMENTS

INITIAL

Electrical Data

Impedance 50 Ω
 Frequency Range DC - 40 GHz.
 VSWR 1.15 @ DC-40 GHz

RoHS Compliant

Drawing not to scale. Dimensions for reference only

Units: inches (mm)

Konnect RF

WWW.KONNECTRF.COM
 1-800-790-5887

PART NUMBER

KAD179306

DESCRIPTION

Adapter, In-Series, 2.92mm Female Jack to Female Jack, Bulkhead Mount

CAGE CODE

664U0

SIGNATURE

X

THIS DRAWING INCLUDING THE
 DESIGNS IS THE PROPERTY OF
 KONNECT RF AND IS NOT TO
 BE USED FOR ANY PURPOSE
 WITHOUT OUR APPROVAL.

Component

Body
 Center Contact

Lock Washer & Nut
 Gasket
 Insulator

Material

Stainless Steel
 BeCu

Stainless Steel
 Silicone Rubber
 P.P.O

Plating/Finish (Micro-Inch)

Passivated
 Gold 4 Min over Nickel-Phos. Alloy
 80 Min over Copper 20 Min

Passivated