

PART NUMBER

**KAD179181**

REV.

DATE

COMMENTS

INITIAL

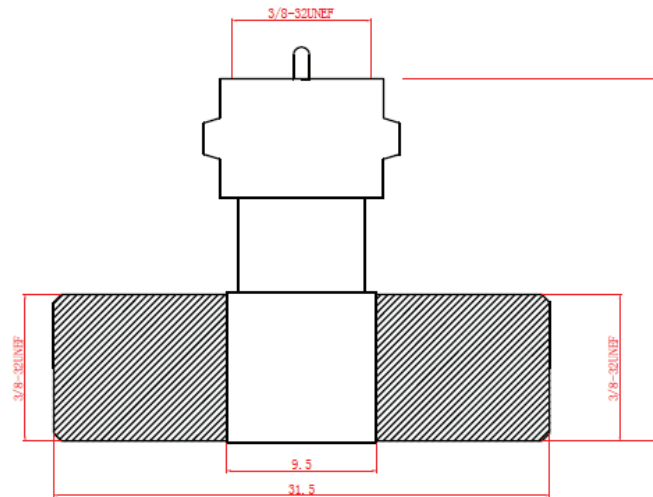
**Electrical Data**

|                                 |                              |
|---------------------------------|------------------------------|
| Impedance                       | 75 $\Omega$                  |
| Frequency Range                 | DC - 1 GHz.                  |
| Working Voltage                 | 170 VRMS @ Sea Level         |
| Contact Resistance              |                              |
| Center                          | $\leq 10 \text{ m}\Omega$    |
| Outer                           | $\leq 5 \text{ m}\Omega$     |
| Insulation Resistance           | $\geq 1,000 \text{ M}\Omega$ |
| Dielectric Withstanding Voltage | 500 VRMS @ Sea Level         |
| VSWR                            | $\leq 1.20$ @ DC-1 GHz       |

**Mechanical Data**

|                    |                 |
|--------------------|-----------------|
| Durability         | 500 Cycles Min. |
| Temperature Range: | -40 °C - 85 °C  |

RoHS Compliant



Drawing not to scale. Dimensions for reference only

Units: mm

**Konnect RF**

WWW.KONNECTRF.COM  
1-800-790-5887

PART NUMBER

**KAD179181**

DESCRIPTION

**Adapter, T-Type, F Female Jack to Male Plug to Female Jack**

CAGE CODE

**664U0**

SIGNATURE

X

THIS DRAWING INCLUDING THE  
DESIGNS IS THE PROPERTY OF  
KONNECT RF AND IS NOT TO  
BE USED FOR ANY PURPOSE  
WITHOUT OUR APPROVAL.

**Component**  
Body \$ Nut  
Center Contact  
Insulator

**Material**  
Zinc  
Brass  
POM

**Plating**  
Nickel  
Tin