

PART NUMBER **KAD179080**

REV.			INITIAL

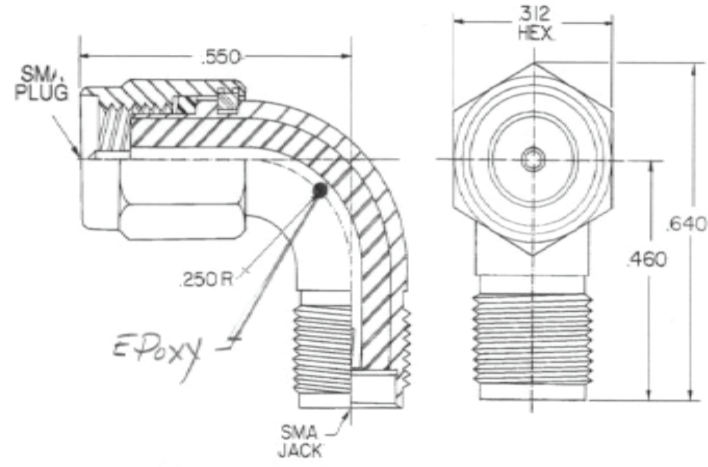
**Electrical Data**

**RoHS Compliant**

Impedance 50 Ω  
 Frequency Range DC-18 GHz  
 VSWR 1.25:1 Max.  
 Insulation Resistance 5,000 MΩ minimum per MIL-STD-202, Method 302  
 Dielectric Withstanding Voltage 500 VRMS

**Environmental Data**

Temperature Cycling MIL-STD-202, Method 102, Test Condition C, Except Test High Temp Shall be +85C  
 Corrosion Salt Spray MIL-STD-202, Method 101, Condition B., Salt Soulitons Shall Be 5 Percent  
 Moisture Resistance MIL-STD-202, Method 106 Insulation Resistance Shall Be 200 MΩ min. Within 5 Minutes after Removal From Solution  
 Vibration MIL-STD-202, Method 204, Condition D  
 Shock MIL-STD-202, Method 213, Condition I  
 Corona Level The Connector Shall Not Exhibit Breakdown (Corona) When The Applied Voltage is 375 Volts rms and the altitude is 70,000 Feet



Drawing not to scale. Dimensions for reference only Units: inches



WWW.KONNECTRF.COM  
 1-800-790-5887

PART NUMBER <b>KAD179080</b>		DESCRIPTION <b>Adapter, In-Series, SMA Radius Right Angle Male Plug to Female Jack, Epoxy Captivated-Captive Contact</b>	
CAGE CODE <b>664U0</b>	SIGNATURE <i>[Signature]</i> <b>X</b>	<b>Component</b> Body & Coupling Nut	<b>Material</b> Stainless Steel Per QQ-S-764 Type 303
THIS DRAWING INCLUDING THE DESIGNS IS THE PROPERTY OF KONNECT RF AND IS NOT TO BE USED FOR ANY PURPOSE WITHOUT OUR APPROVAL.		<b>Plating</b> Gold Per MIL-G-45204 over Nickel Per MIL-C-26074, Class 1	
		Center Contact	BeCu Per QQ-C-530
		Insulator	TEFLON Per MIL-P-19468A